

Card Making measurements and matt layers (Metric - Australia)

A5 cards are created from a half sheet of 29.7cm x 21cm

I cut down the A4 sheet to be 28cm x 21cm to make my layering measurements easier so the card front = 14cm x 10.5cm for both landscape and portrait styles:

- 28cm x 10.5cm, scored at 14cm
- 21cm x 14cm, scored at 10.5cm

Layering cardstock

These layers will be perfectly centred on a portrait or landscape card. Use these measurements to have a 2.5mm border – if you want a larger border, skip one measurement to have a 5mm border on each side.

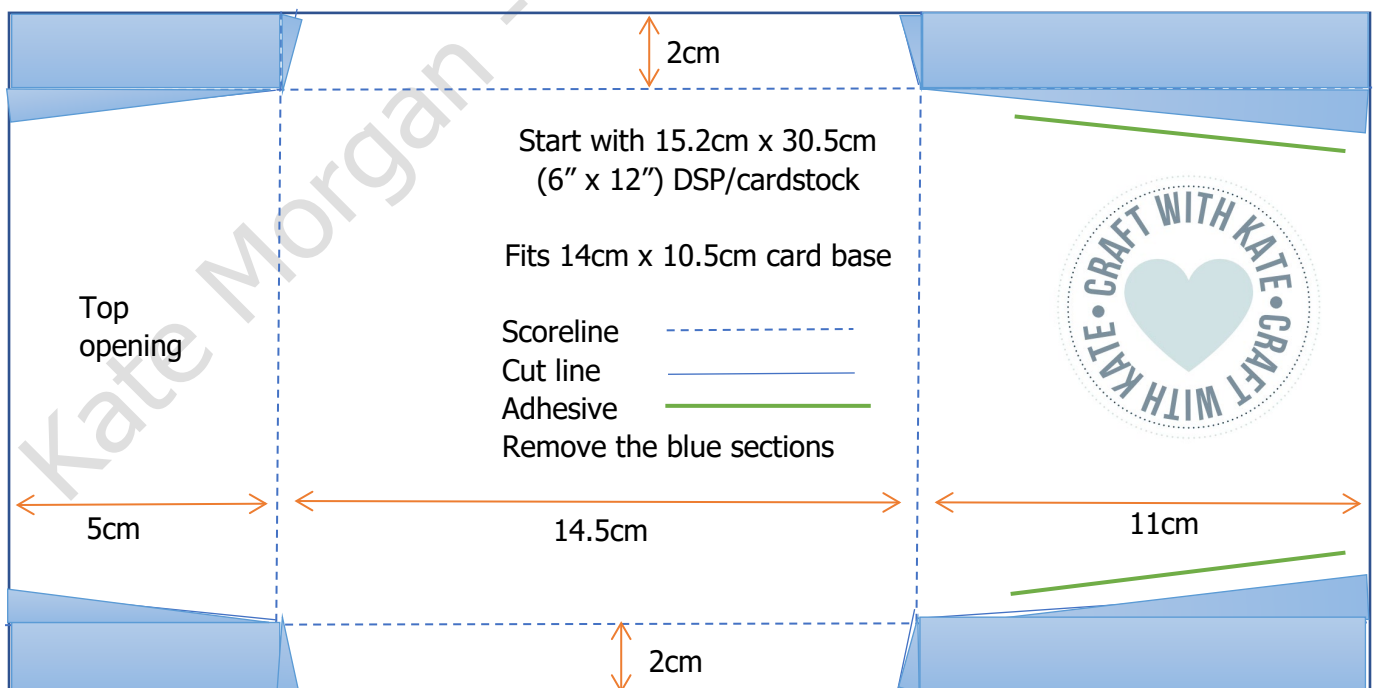
10cm x 13.5cm
9.5cm x 13cm
9cm x 12.5cm
8.5cm x 12cm
8cm x 11.5cm
7.5cm x 11cm
7cm x 10.5cm
6.5cm x 10cm
6cm x 9.5cm
5.5cm x 9cm

Envelopes

Cut a 12" x 12" piece of DSP in half, 12" x 6" (30.5cm x 15.2cm)

Score the long edge at 5cm & 19.5cm, then score short edge at 2cm on both sides

Remove the blue sections with scissors, the burnish fold lines.



Fold in the short sides, then the large end, add glue/adhesive and press firmly. Leave the top for opening.

Other size envelopes (Metric - Australia)

Card Size = 10.5cm x 10.5cm

Start with 12" x 6" (30.5cm x 15.2cm), cut 6.5cm from one end

Score the long edge at 5cm & 16cm

Score the short side at 2cm on both sides

Cut and fold the same way as above

Card Size = 10.5cm x 8.5cm

Start with 12" x 6" (30.5cm x 15.2cm), cut 11.5cm from one end

Score the long edge at 5cm & 14cm

Score the short side at 2cm on both sides

Cut and fold the same way, but glue together the two larger sides and leave one of the 2cm ends for the top opening!

Template: Envelope for Slimline Card (Metric)

Slimline card measures 21cm x 10cm to fit inside

Score on the dotted lines - cut on the solid lines

Place Adhesive (reverse side) as shown

